

Operating Instructions

Part No.
MK5A-1L & -2R

Container Lugs For Bottom Side Lifting

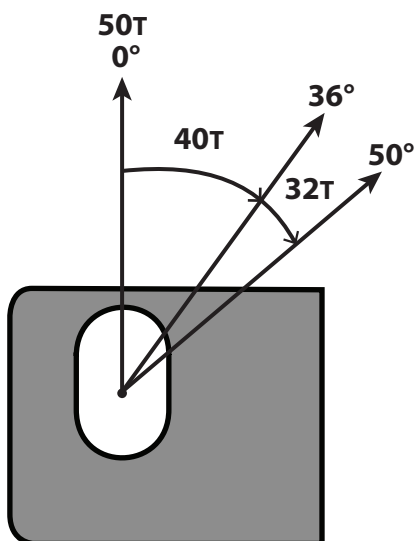
The working load limit (W.L.L.) per set of 4 lugs is **32 tonnes** at a maximum angle of inclination of 50° from vertical. The W.L.L. is **40 tonnes** at a maximum angle of inclination of 36° from vertical. The W.L.L. is **50 tonnes** when used vertically.

Each lug will be marked with the maximum load at the angle of lift, as well as individual serial numbers.

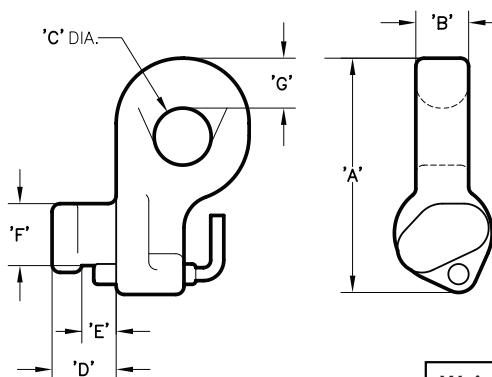
Lugs are handed left and right. Left-hand lugs are marked with an **L** and right-hand lugs are marked with an **R**.

W.L.L. & Lifting Angle

MK5A-1L & 2R Container Lifting Lugs



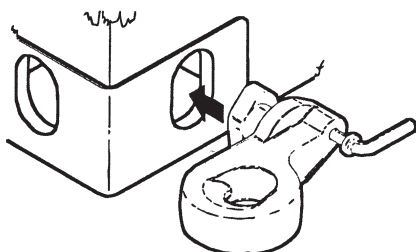
W.L.L. per set (4)	
tonnes	angle
50	0°
40	36°
32	50°



Weight: 4.7 kg ea

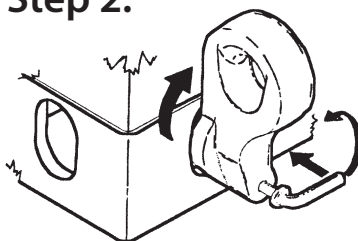
Fits Standard I.S.O. Corner Castings	DIM	'A'	'B'	'C'	'D'	'E'	'F'	'G'
	mm	187.6	40	45	52.3	30	50	38
	(inch)	(7.35)	(1.57)	(1.77)	(2.06)	(1.18)	(1.97)	(1.50)

Step 1.



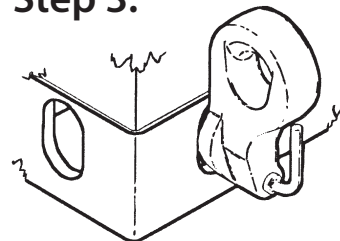
Insert lug into bottom-side I.S.O. corner casting hole.

Step 2.



Turn lug until spring bolt is fully engaged in corner casting hole

Step 3.



Lug in lifting position