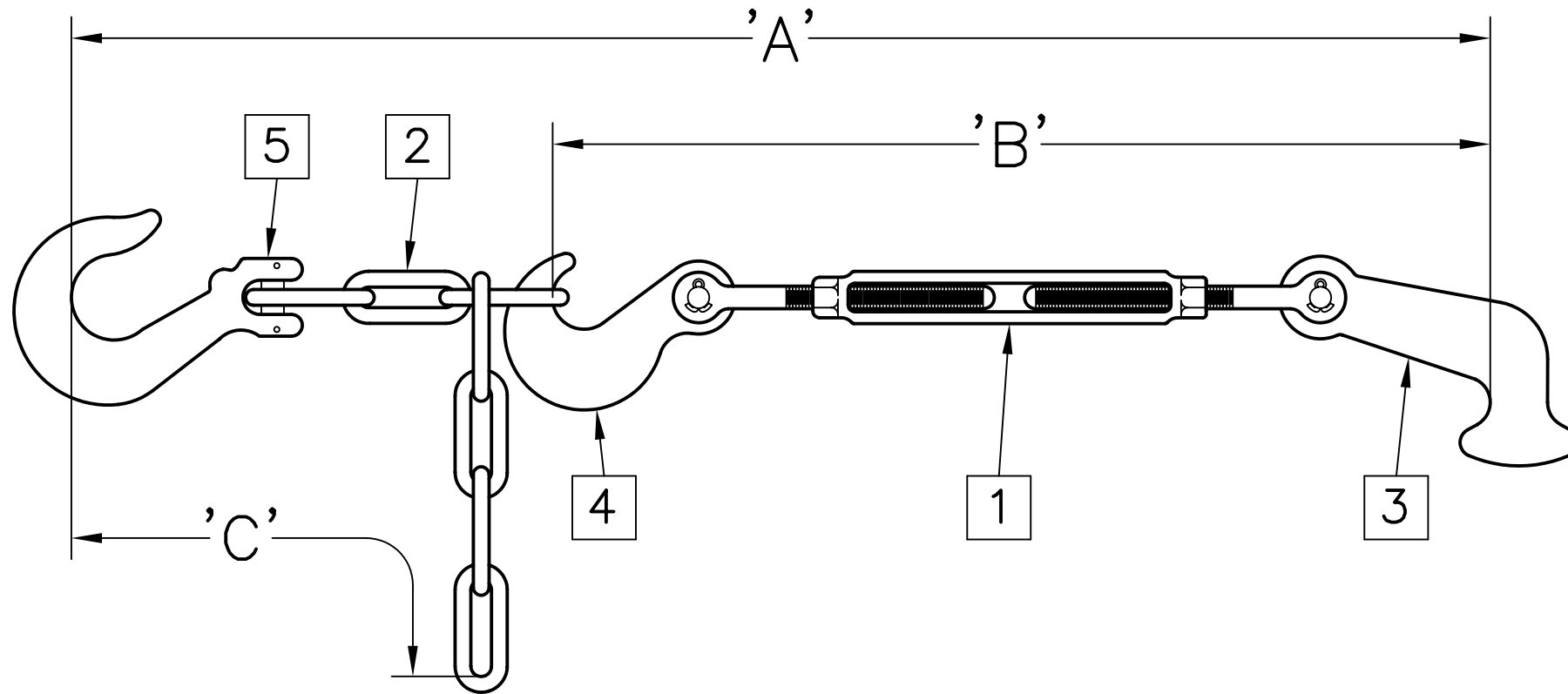


NEXT ASSEMBLY  
E.W.O. 2584

ISSUE	REVISION RECORD	DATE	APPD.
-------	-----------------	------	-------

# 17MTB/1630 TIEDOWN ASSEMBLY (VEHICLE)



### SPECIFICATIONS

**MATERIAL:**  
ALL CONSTRUCTION IS PER BEST COMMERCIAL QUALITY. SEE CHART FOR SPECIFIC MATERIAL.

**STRENGTH:**  
SAFE WORKING—8,500 LBS.  
PROOF: 9,350 LBS.  
MINIMUM BREAK—17,000 LBS.

**FINISH:**  
ALL SURFACE FINISHES PROVIDE GOOD CORROSION PROTECTION. SEE CHART FOR SPECIFIC FINISH.

**WEIGHT:**  
6.1 KGS. [13.5 LBS.]

COMPLETE ASSEMBLY	
MODEL NO.	USEABLE LENGTH 'A'
17MTB/1630	20.0" TO 108.0"

TURNBUCKLE ASSEMBLY	
MODEL NO.	USEABLE LENGTH 'B'
17MTB-1/1630	17.0" TO 23.0"

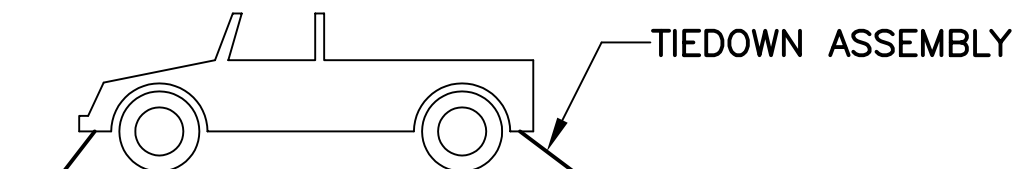
CHAIN ASSEMBLY	
MODEL NO.	DIM. 'C'
17MTB-2/1630	85.0"

# 17MTB/1630 TIEDOWN ASSEMBLY (VEHICLE)



PECK & HALE  
180 DIVISION AVENUE  
W. SAYVILLE, N.Y. 11796 U.S.A.

THIS DRAWING AND ANY PRINT MADE THEREFROM IS THE EXCLUSIVE PROPERTY OF PECK & HALE. IT MUST NOT BE TRACED NOR REPRODUCED IN ANY MANNER NOR SHALL IT BE SUBMITTED TO OUTSIDE PARTIES FOR EXAMINATION WITHOUT OUR WRITTEN CONSENT. IT SHALL BE USED ONLY AS MEANS OF REFERENCE TO WORK DESIGNED OR FURNISHED BY US.



APPLICATION

ITEM NO.	PART NAME	PART DESCRIPTION
5	HOOK	STEEL, ZINC PLATED
4	HOOK	STEEL, ZINC PLATED
3	HOOK	STEEL, ZINC PLATED
2	CHAIN	LONG LINK, STEEL, ZINC PLATED
1	TURNBUCKLE	STEEL, GALVANIZED

### LIST OF COMPONENTS

FSCM No: 94658	DRN: S. JEFFREY	SHEET	OF
DATE: 11/19/12	CHK: J. SZEGLIN	4342	
SCALE: NONE	APPD: J. SZEGLIN	DWG. NO.	REV.