

NEXT ASSEMBLY

E.W.O. 2089  
 E.W.O. 3314  
 E.W.O. 3722  
 R.T.E. 1448

# 35MTC/1577 TIEDOWN ASSEMBLY (VEHICLE)

ISSUE	REVISION RECORD	DATE	APPD.

### SPECIFICATIONS

**MATERIAL:**

ALL CONSTRUCTION IS PER BEST COMMERCIAL QUALITY. SEE CHART FOR SPECIFIC MATERIAL.

**STRENGTH:**

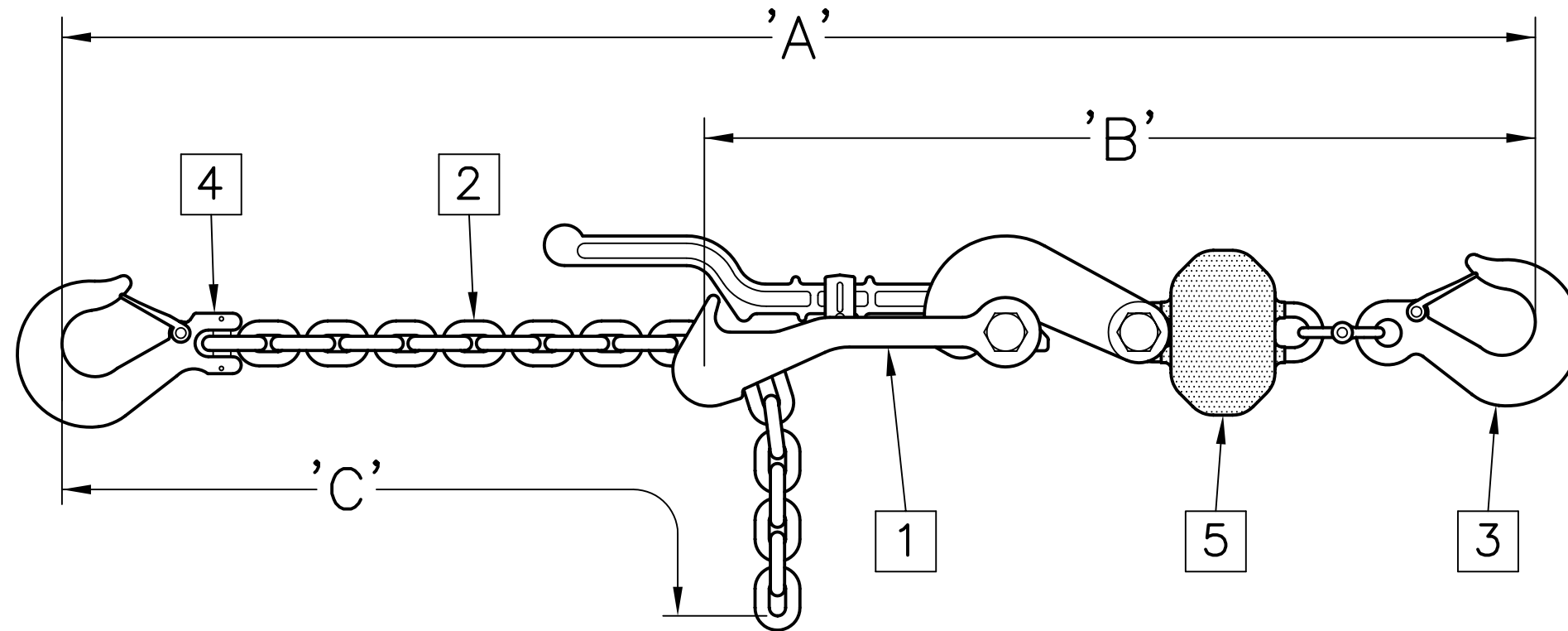
SAFE WORKING—17,500 LBS.  
 PROOF—21,000 LBS.  
 MINIMUM BREAK—35,000 LBS.

**FINISH:**

ALL SURFACE FINISHES PROVIDE GOOD CORROSION PROTECTION. SEE CHART FOR SPECIFIC FINISH.

**WEIGHT:**

28.0 KGS. [61.7 LBS.]



COMPLETE ASSEMBLY	
MODEL NO.	USEABLE LENGTH 'A'
<b>35MTC/1577</b>	39.0" TO 187.0"

TENSIONER ASSEMBLY	
MODEL NO.	DIM. 'B'
<b>35MTC-1/1577</b>	28.75"

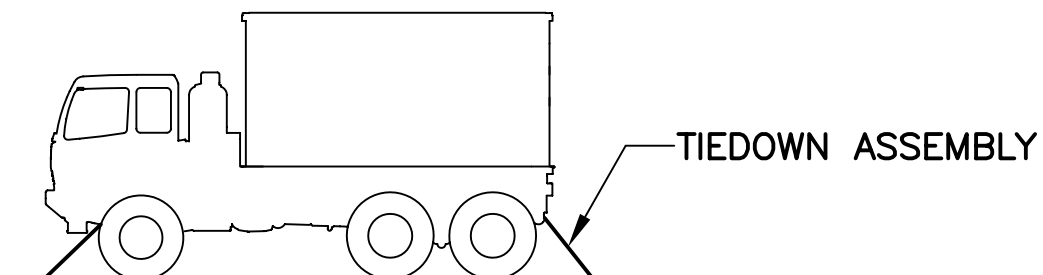
CHAIN ASSEMBLY	
MODEL NO.	DIM. 'C'
<b>35MTC-2/819A</b>	163.0"

# 35MTC/1577 TIEDOWN ASSEMBLY (VEHICLE)



PECK & HALE  
 180 DIVISION AVENUE  
 W. SAYVILLE, N.Y. 11796 U.S.A.

THIS DRAWING AND ANY PRINT MADE THEREFROM IS THE EXCLUSIVE PROPERTY OF PECK & HALE. IT MUST NOT BE TRACED NOR REPRODUCED IN ANY MANNER NOR SHALL IT BE SUBMITTED TO OUTSIDE PARTIES FOR EXAMINATION WITHOUT OUR WRITTEN CONSENT. IT SHALL BE USED ONLY AS MEANS OF REFERENCE TO WORK DESIGNED OR FURNISHED BY US.



APPLICATION

ITEM NO.	PART NAME	PART DESCRIPTION
5	SHOCK MITIGATOR	CHAIN/ELASTOMER COMPOUND
4	HOOK	STEEL, ZINC PLATED
3	HOOK	STEEL, ZINC PLATED
2	CHAIN	STEEL, ZINC PLATED
1	TENSIONER	STEEL, GALVANIZED

**LIST OF COMPONENTS**

FSCM No: 94658	DRN: S JEFFREY	SHEET	OF
DATE: 11/19/12	CHK: J. SZEGLIN	<b>4134</b> DWG. NO.	
SCALE: NONE	APPD: J. SZEGLIN		