

NEXT ASSEMBLY
E.W.O. 3164
E.W.O. 3367

35MTC/1582 TIEDOWN ASSEMBLY (LCAC)

ISSUE	REVISION RECORD	DATE	APPD.

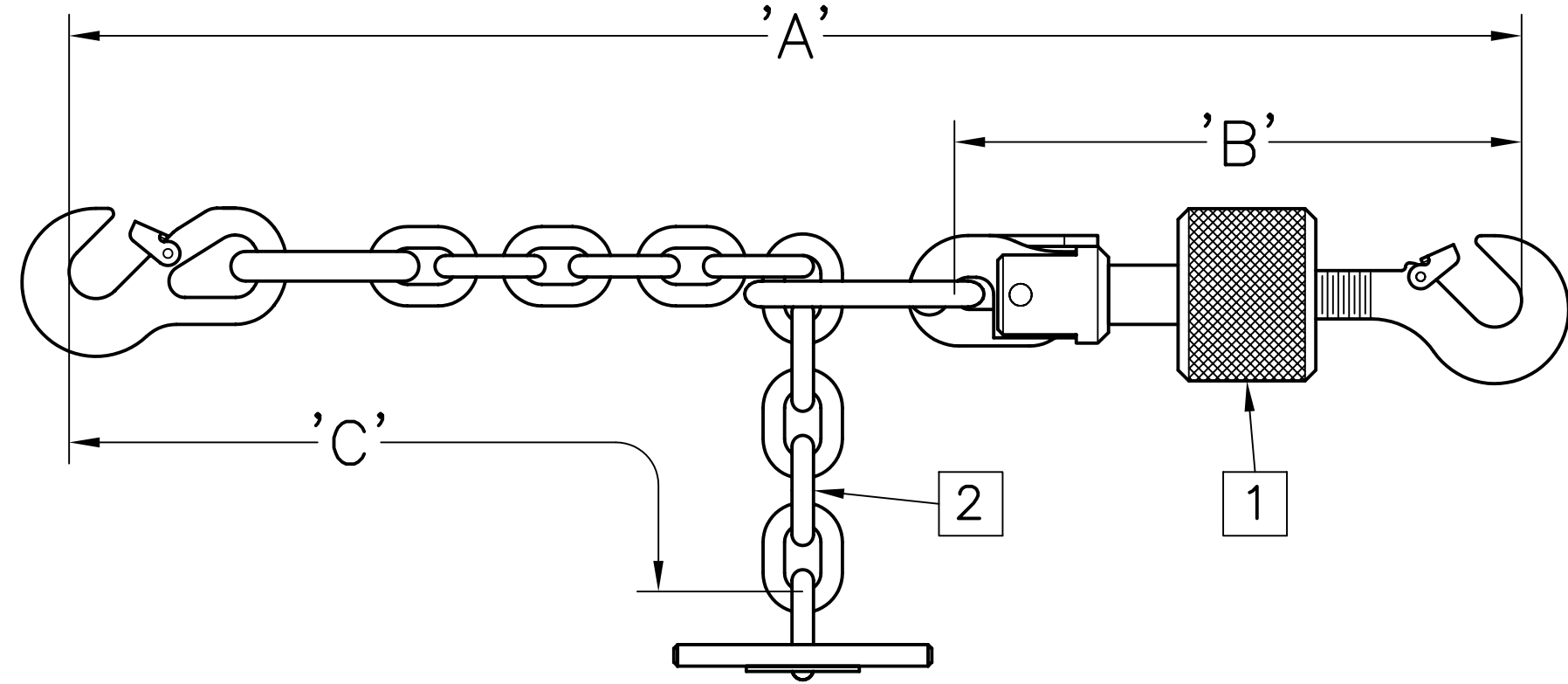
SPECIFICATIONS

MATERIAL:
ALL CONSTRUCTION IS PER BEST COMMERCIAL QUALITY. SEE CHART FOR SPECIFIC MATERIAL.

STRENGTH:
SAFE WORKING—17,500 LBS.
PROOF—12,000 LBS.
MINIMUM BREAK—35,000 LBS.

FINISH:
ALL SURFACE FINISHES PROVIDE GOOD CORROSION PROTECTION. SEE CHART FOR SPECIFIC FINISH.

WEIGHT:
15.5 KGS. [34.0 LBS.]



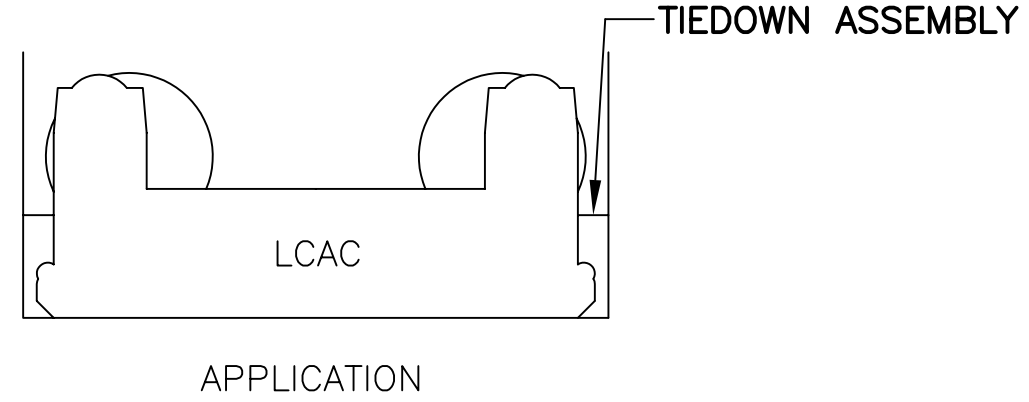
COMPLETE ASSEMBLY	
MODEL NO.	USEABLE LENGTH 'A'
35MTC/1582	16.0" TO 102.0"

TENSIONER ASSEMBLY	
MODEL NO.	USEABLE LENGTH 'B'
PH4035-10C	12.0" TO 16.50"

CHAIN ASSEMBLY	
MODEL NO.	DIM. 'C'
ASC15-1	89.50"

**35MTC/1582
TIEDOWN ASSEMBLY
(LCAC)**

Peck & Hale
PECK & HALE
180 DIVISION AVENUE
W. SAYVILLE, N.Y. 11796 U.S.A.



ITEM NO.	PART NAME	PART DESCRIPTION
2	CHAIN	STEEL, ZINC PLATED
1	TENSIONER	STEEL, ZINC PLATED

LIST OF COMPONENTS

THIS DRAWING AND ANY PRINT MADE THEREFROM IS THE EXCLUSIVE PROPERTY OF PECK & HALE. IT MUST NOT BE TRACED NOR REPRODUCED IN ANY MANNER NOR SHALL IT BE SUBMITTED TO OUTSIDE PARTIES FOR EXAMINATION WITHOUT OUR WRITTEN CONSENT. IT SHALL BE USED ONLY AS MEANS OF REFERENCE TO WORK DESIGNED OR FURNISHED BY US.

FSCM No: 94658	DRN: S. JEFFREY	SHEET	OF
DATE: 11/19/12	CHK: J. SZEGLIN	4147	
SCALE: NONE	APPD: J. SZEGLIN	DWG. NO.	REV.