

NEXT ASSEMBLY

E.W.O. 2378
E.W.O. 3297

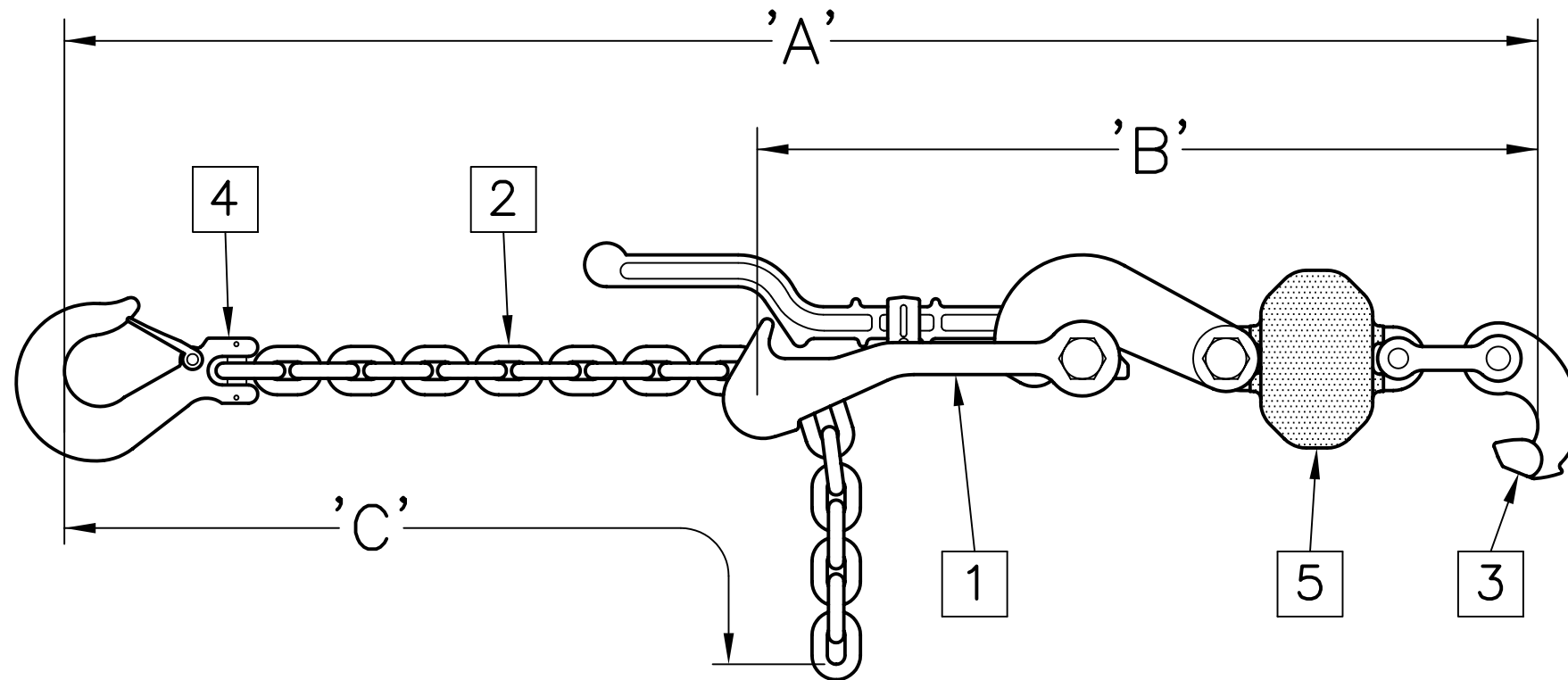
ISSUE

REVISION RECORD

DATE

APPD.

35MTC/819A TIEDOWN ASSEMBLY (VEHICLE)



SPECIFICATIONS

MATERIAL:

ALL CONSTRUCTION IS PER BEST COMMERCIAL QUALITY. SEE CHART FOR SPECIFIC MATERIAL.

STRENGTH:

SAFE WORKING—17,500 LBS.
PROOF—19,250 LBS.
MINIMUM BREAK—35,000 LBS.

FINISH:

ALL SURFACE FINISHES PROVIDE GOOD CORROSION PROTECTION. SEE CHART FOR SPECIFIC FINISH.

WEIGHT:

26.6 KGS. [58.6 LBS.]

COMPLETE ASSEMBLY	
MODEL NO.	USEABLE LENGTH 'A'
35MTC/819A	34.0" TO 185.0"

TENSIONER ASSEMBLY	
MODEL NO.	DIM. 'B'
35MTC-1/819A	25.0"

CHAIN ASSEMBLY	
MODEL NO.	DIM. 'C'
35MTC-2/819A	163.0"

35MTC/819A TIEDOWN ASSEMBLY (VEHICLE)



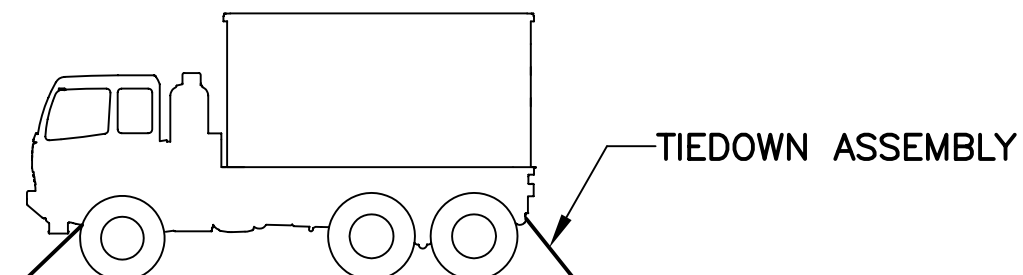
PECK & HALE
180 DIVISION AVENUE
W. SAYVILLE, N.Y. 11796 U.S.A.

THIS DRAWING AND ANY PRINT MADE THEREFROM IS THE EXCLUSIVE PROPERTY OF PECK & HALE. IT MUST NOT BE TRACED NOR REPRODUCED IN ANY MANNER NOR SHALL IT BE SUBMITTED TO OUTSIDE PARTIES FOR EXAMINATION WITHOUT OUR WRITTEN CONSENT. IT SHALL BE USED ONLY AS MEANS OF REFERENCE TO WORK DESIGNED OR FURNISHED BY US.

ITEM NO.	PART NAME	PART DESCRIPTION
5	SHOCK MITIGATOR	CHAIN/ELASTOMER COMPOUND
4	HOOK	STEEL, ZINC PLATED
3	HOOK	STEEL, GALVANIZED
2	CHAIN	STEEL, ZINC PLATED
1	TENSIONER	STEEL, GALVANIZED

FSCM No: 94658	DRN: S. JEFFREY	SHEET	OF
DATE: 12/18/13	CHK:	3978	REV.
SCALE: NONE	APPD:	DWG. NO.	

LIST OF COMPONENTS



APPLICATION