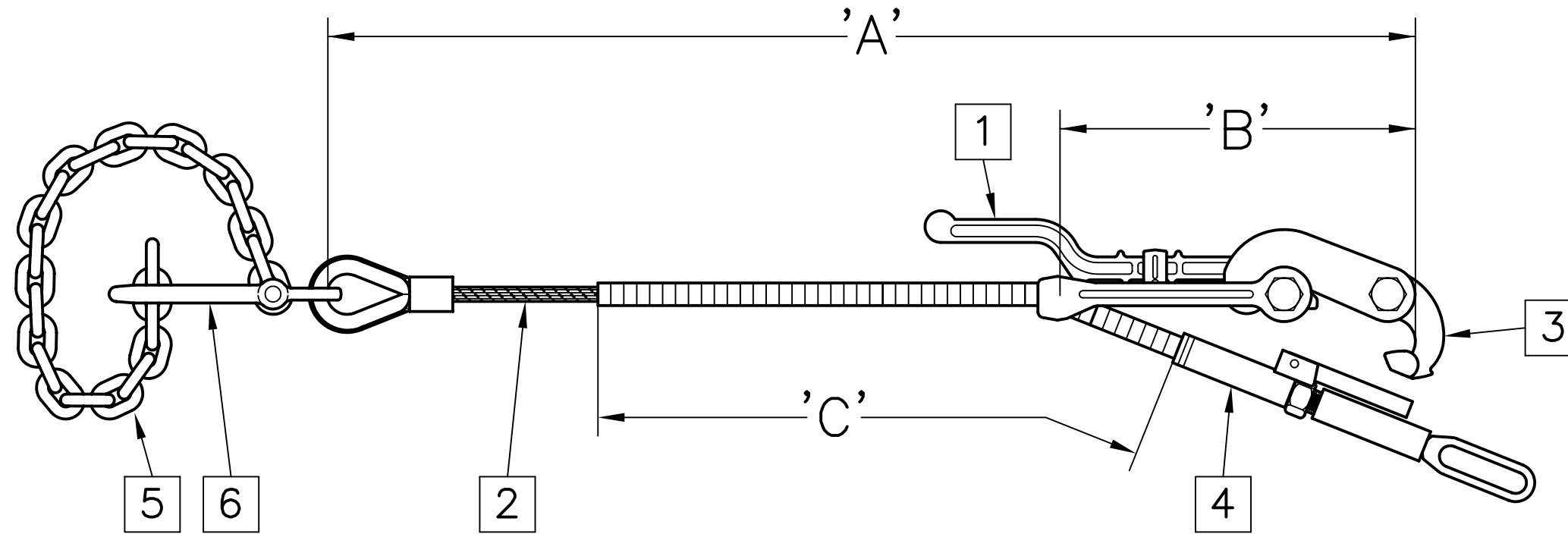


NEXT ASSEMBLY  
E.W.O. 2136

ISSUE	REVISION RECORD	DATE	APPD.
-------	-----------------	------	-------

# 35M/819 TIEDOWN ASSEMBLY (VEHICLE)



### SPECIFICATIONS

**MATERIAL:**  
ALL CONSTRUCTION IS PER BEST COMMERCIAL QUALITY. SEE CHART FOR SPECIFIC MATERIAL.

**STRENGTH:**  
PROOF-17,500 LBS.  
MINIMUM BREAK-35,000 LBS.

**FINISH:**  
ALL SURFACE FINISHES PROVIDE GOOD CORROSION PROTECTION. SEE CHART FOR SPECIFIC FINISH.

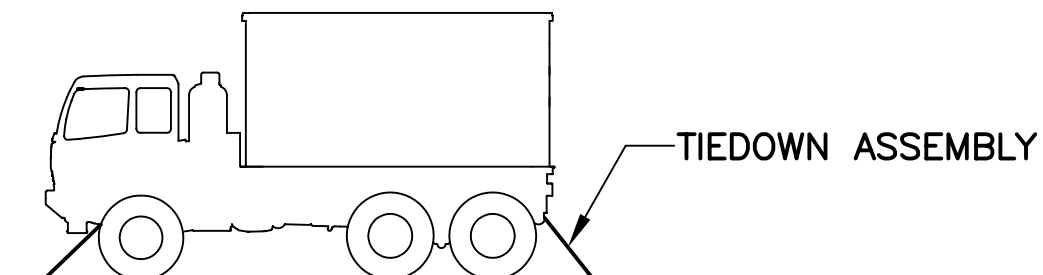
**WEIGHT:**  
23.9 KGS. [52.5 LBS.]

COMPLETE ASSEMBLY	
MODEL NO.	USEABLE LENGTH 'A'
<b>35M/819</b>	59.0" TO 126.0"

TENSIONER ASSEMBLY	
MODEL NO.	DIM. 'B'
<b>35M-1/819</b>	16.0"

WIRE ROPE ASSEMBLY	
MODEL NO.	DIM. 'C'
<b>35M-3/819A</b>	74.0"

# 35M/819 TIEDOWN ASSEMBLY (VEHICLE)



APPLICATION

ITEM NO.	PART NAME	PART DESCRIPTION
6	CHAIN GRAB	STEEL, GALVANIZED
5	CHAIN ASSEMBLY	STEEL, ZINC PLATED
4	HIGH TENSION UNIT	STEEL, ZINC PLATED
3	HOOK	STEEL, GALVANIZED
2	WIRE ROPE	STEEL, GALVANIZED
1	TENSIONER	STEEL, GALVANIZED

### LIST OF COMPONENTS



PECK & HALE  
180 DIVISION AVENUE  
W. SAYVILLE, N.Y. 11796 U.S.A.

THIS DRAWING AND ANY PRINT MADE THEREFROM IS THE EXCLUSIVE PROPERTY OF PECK & HALE. IT MUST NOT BE TRACED NOR REPRODUCED IN ANY MANNER NOR SHALL IT BE SUBMITTED TO OUTSIDE PARTIES FOR EXAMINATION WITHOUT OUR WRITTEN CONSENT. IT SHALL BE USED ONLY AS MEANS OF REFERENCE TO WORK DESIGNED OR FURNISHED BY US.

FSCM No: 94658	DRN: S. JEFFREY	SHEET	OF
DATE: 11/6/12	CHK: J. SZEGLIN	<b>1248</b>	REV.
SCALE: NONE	APPD: J. SZEGLIN	DWG. NO.	