

# 70MTC/1602 TIEDOWN ASSEMBLY (VEHICLE)

|       |                 |      |       |
|-------|-----------------|------|-------|
| ISSUE | REVISION RECORD | DATE | APPD. |
|-------|-----------------|------|-------|

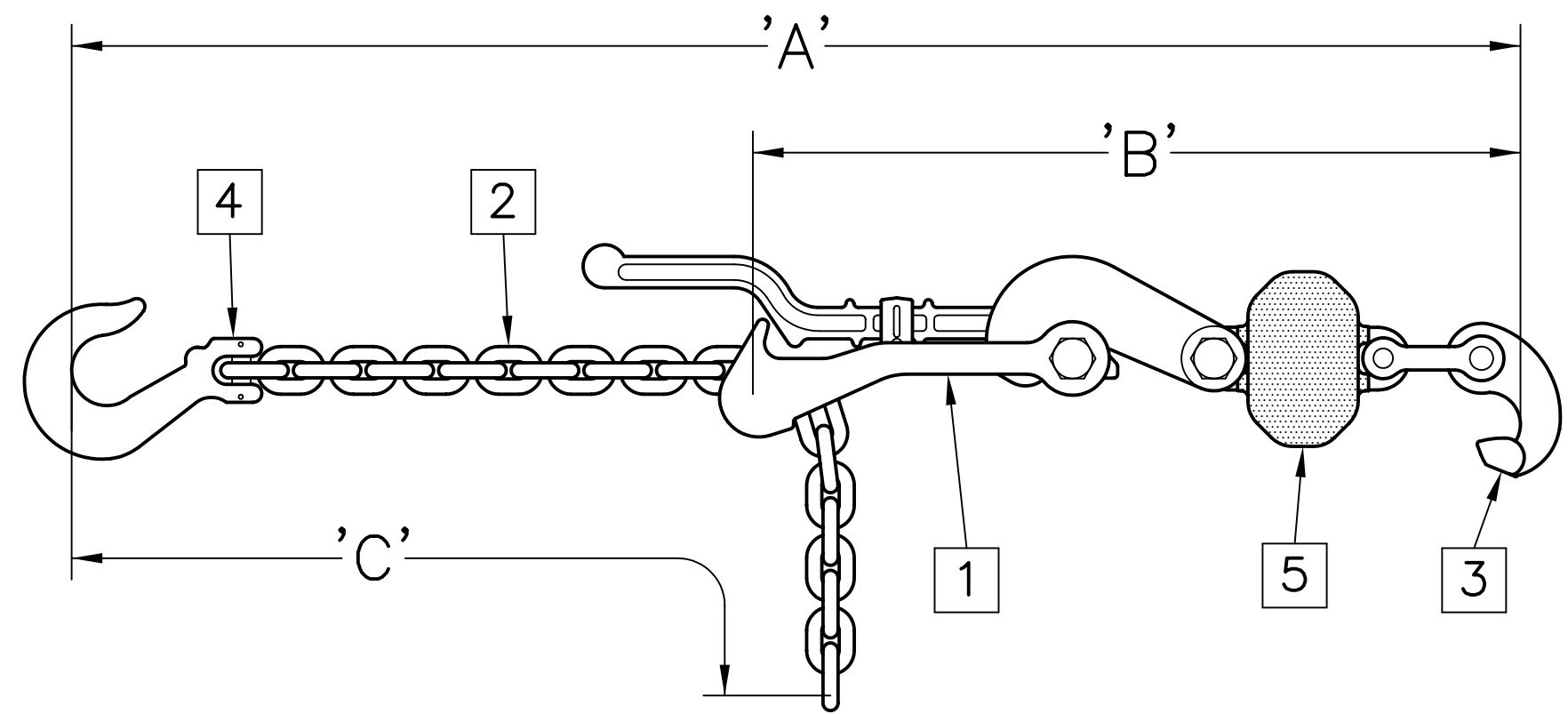
### SPECIFICATIONS

**MATERIAL:**  
ALL CONSTRUCTION IS PER BEST COMMERCIAL QUALITY. SEE CHART FOR SPECIFIC MATERIAL.

**STRENGTH:**  
SAFE WORKING—35,000 LBS.  
PROOF: 38,500 LBS.  
MINIMUM BREAK—70,000 LBS.

**FINISH:**  
ALL SURFACE FINISHES PROVIDE GOOD CORROSION PROTECTION. SEE CHART FOR SPECIFIC FINISH.

**WEIGHT:**  
29.5 KGS. [65.0 LBS.]



| COMPLETE ASSEMBLY |                    |
|-------------------|--------------------|
| MODEL NO.         | USEABLE LENGTH 'A' |
| <b>70MTC/1602</b> | 40.0" TO 108.0"    |

| TENSIONER ASSEMBLY  |          |
|---------------------|----------|
| MODEL NO.           | DIM. 'B' |
| <b>70MTC-1/1602</b> | 27.50"   |

| CHAIN ASSEMBLY      |          |
|---------------------|----------|
| MODEL NO.           | DIM. 'C' |
| <b>70MTC-2/1602</b> | 83.0"    |

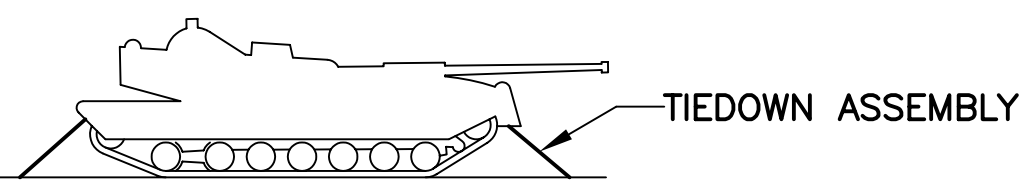
## 70MTC/1602 TIEDOWN ASSEMBLY (VEHICLE)

**PECK & HALE**  
 180 DIVISION AVENUE  
 W. SAYVILLE, N.Y. 11796 U.S.A.

THIS DRAWING AND ANY PRINT MADE THEREFROM IS THE EXCLUSIVE PROPERTY OF PECK & HALE. IT MUST NOT BE TRACED NOR REPRODUCED IN ANY MANNER NOR SHALL IT BE SUBMITTED TO OUTSIDE PARTIES FOR EXAMINATION WITHOUT OUR WRITTEN CONSENT. IT SHALL BE USED ONLY AS MEANS OF REFERENCE TO WORK DESIGNED OR FURNISHED BY US.

| ITEM NO. | PART NAME       | PART DESCRIPTION         |
|----------|-----------------|--------------------------|
| 5        | SHOCK MITIGATOR | CHAIN/ELASTOMER COMPOUND |
| 4        | HOOK            | STEEL, ZINC PLATED       |
| 3        | HOOK            | STEEL, GALVANIZED        |
| 2        | CHAIN           | STEEL, ZINC PLATED       |
| 1        | TENSIONER       | STEEL, GALVANIZED        |

|                |                 |             |      |
|----------------|-----------------|-------------|------|
| FSCM No: 94658 | DRN: S. JEFFREY | SHEET       | OF   |
| DATE: 11/19/12 | CHK:            | <b>4215</b> | REV. |
| SCALE: NONE    | APPD:           | DWG. NO.    |      |



APPLICATION

### LIST OF COMPONENTS