

NEXT ASSEMBLY

E.W.O. 2288

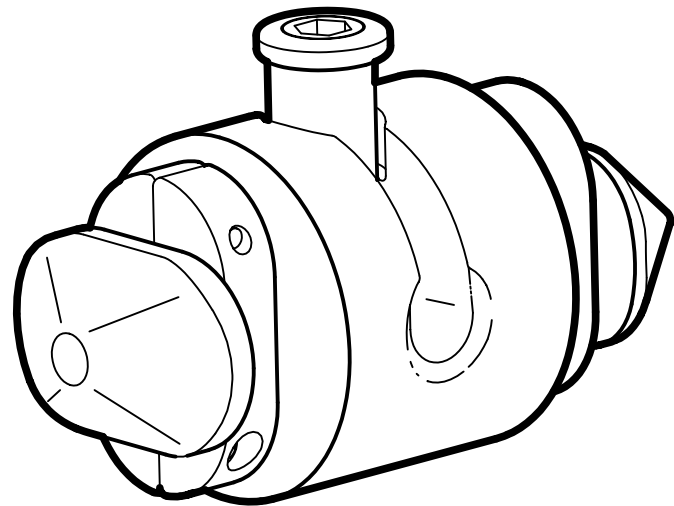
ISSUE

REVISION RECORD

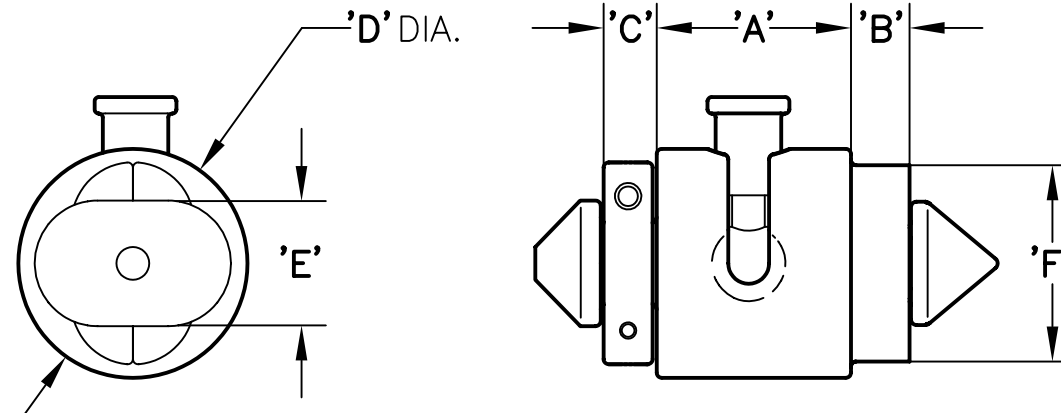
DATE

APPD.

CTC1012-23-1 TWISTLOCK (CONLINK)



DIMENSIONAL DATA
COMMERCIAL TOLERANCE APPLIES



SPECIFICATIONS

MATERIAL:
STEEL

STRENGTH: (MINIMUM BREAK)
BETWEEN BOTTOM CORNER FITTINGS
TENSION-54,000 LBS.
SHEAR-16,600 LBS.
COMPRESSION-46,100 LBS.

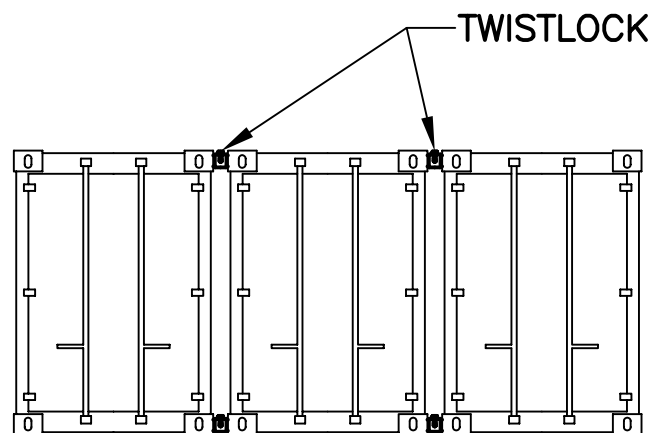
FINISH:

CTC1012-23-1: SELF COLOR
CTC1012-23-1PG: CARC (COLOR-GREEN)
CTC1012-23-1PT: CARC (COLOR-TAN)
CTC1012-23-1B: PAINTED (COLOR-GREEN)
CTC1012-23-1K: ZINC PLATED-CLEAR

WEIGHT:

4.6 KGS. [10.1 LBS.]

MODEL NO.	DIM.	'A'	'B'	'C'	'D'	'E'	'F'
CTC1012-23-1	MM	76.2	22.9	21.8	88.9	48.8	76.2
	(INCH)	(3.00)	(0.90)	(0.86)	(3.50)	(1.92)	(3.00)



APPLICATION

CTC1012-23-1 TWISTLOCK (CONLINK)



PECK & HALE
180 DIVISION AVENUE
W. SAYVILLE, N.Y. 11796 U.S.A.

THIS DRAWING AND ANY PRINT MADE THEREFROM IS THE EXCLUSIVE PROPERTY OF PECK & HALE. IT MUST NOT BE TRACED NOR REPRODUCED IN ANY MANNER NOR SHALL IT BE SUBMITTED TO OUTSIDE PARTIES FOR EXAMINATION WITHOUT OUR WRITTEN CONSENT. IT SHALL BE USED ONLY AS MEANS OF REFERENCE TO WORK DESIGNED OR FURNISHED BY US.

FSCM No: 94658	DRN: S. JEFFREY	SHEET	OF
DATE: 11/12/12	CHK:	3810	REV.
SCALE: NONE	APPD:		