

F678-50-1
'D'-RING
(BREECH BASE)

DIMENSIONAL DATA
DIMENSIONS SHOWN IN INCHES AND [MILLIMETERS]
DIMENSIONS ARE REFERENCE ONLY

SPECIFICATIONS

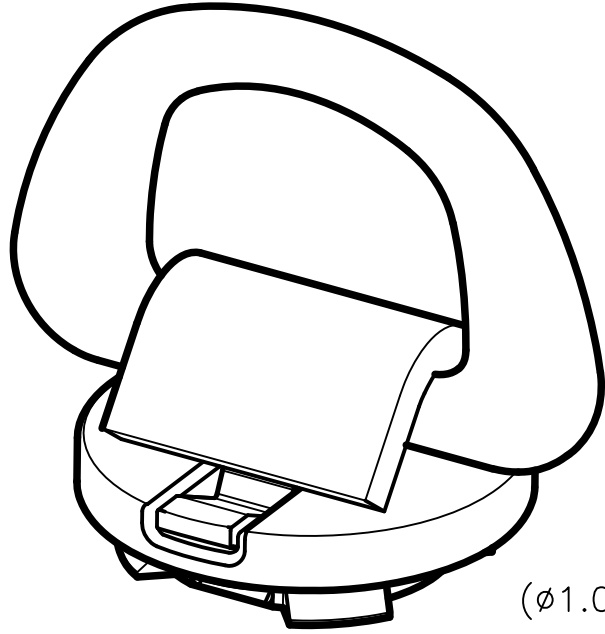
MATERIAL:
STEEL

STRENGTH:
SAFE WORKING-25 TONNES
PROOF-37.4 TONNES
MINIMUM BREAK-50 TONNES

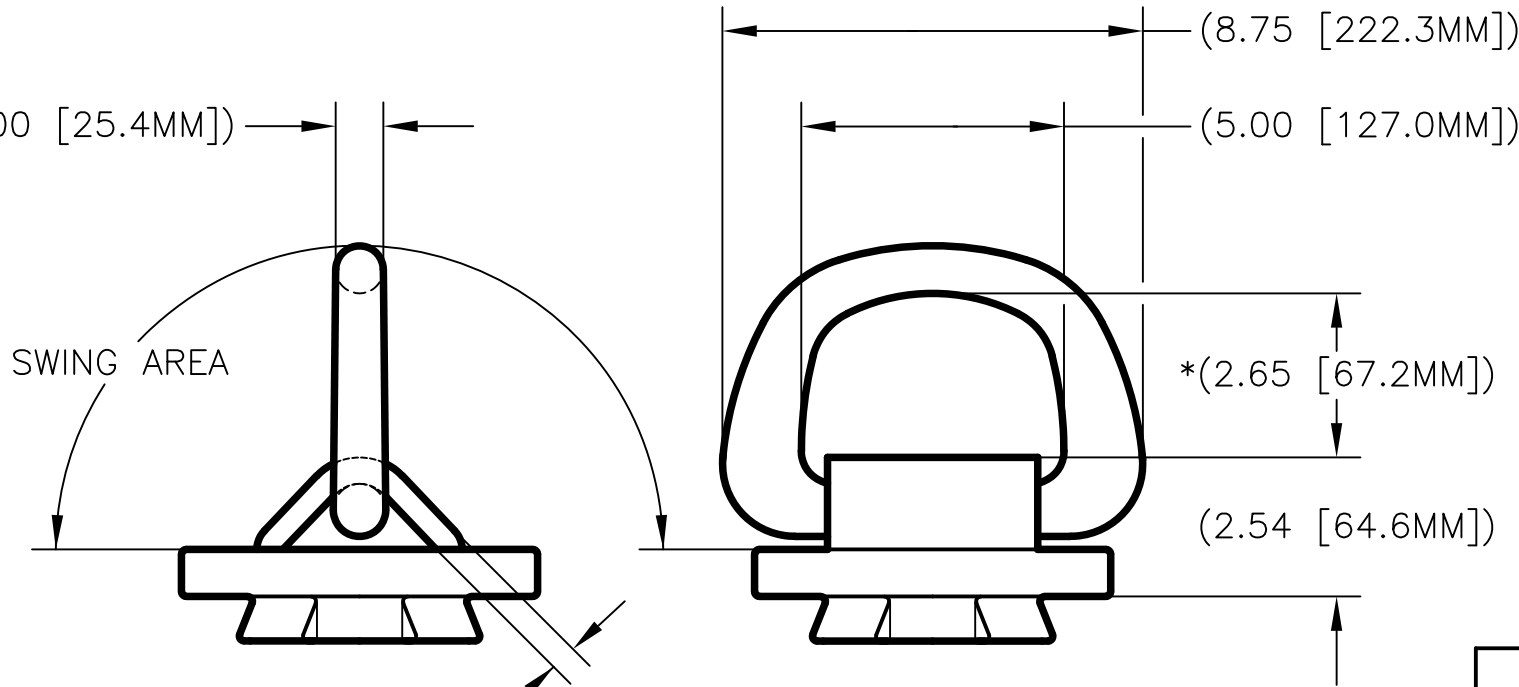
FINISH:
GALVANIZED

WEIGHT:
8.9 KGS. (19.6 LBS.)

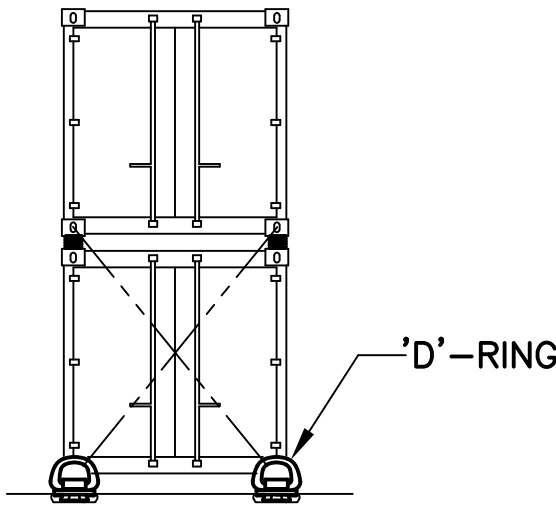
MATING FITTINGS:
F655 & F700 SOCKET



(ϕ 1.00 [25.4MM])



*DIMENSION IS WITH 'D'-RING IN TENSION



APPLICATION

F678-50-1
'D'-RING
(BREECH BASE)



PECK & HALE, L.L.C.
180 DIVISION AVENUE
WEST SAYVILLE, NY 11796
USA

THIS DRAWING AND ANY PRINT MADE THEREFROM IS THE EXCLUSIVE PROPERTY OF PECK & HALE. IT MUST NOT BE TRACED NOR REPRODUCED IN ANY MANNER NOR SHALL IT BE SUBMITTED TO OUTSIDE PARTIES FOR EXAMINATION WITHOUT OUR WRITTEN CONSENT. IT SHALL BE USED ONLY AS MEANS OF REFERENCE TO WORK DESIGNED OR FURNISHED BY US.

FSCM NO: 94658	DRN: S. JEFFREY	3827	A
DATE: 11/27/12	CHK: J. NAIR		
SCALE: NONE	APPD: J. NAIR	DWG. NO.	REV.