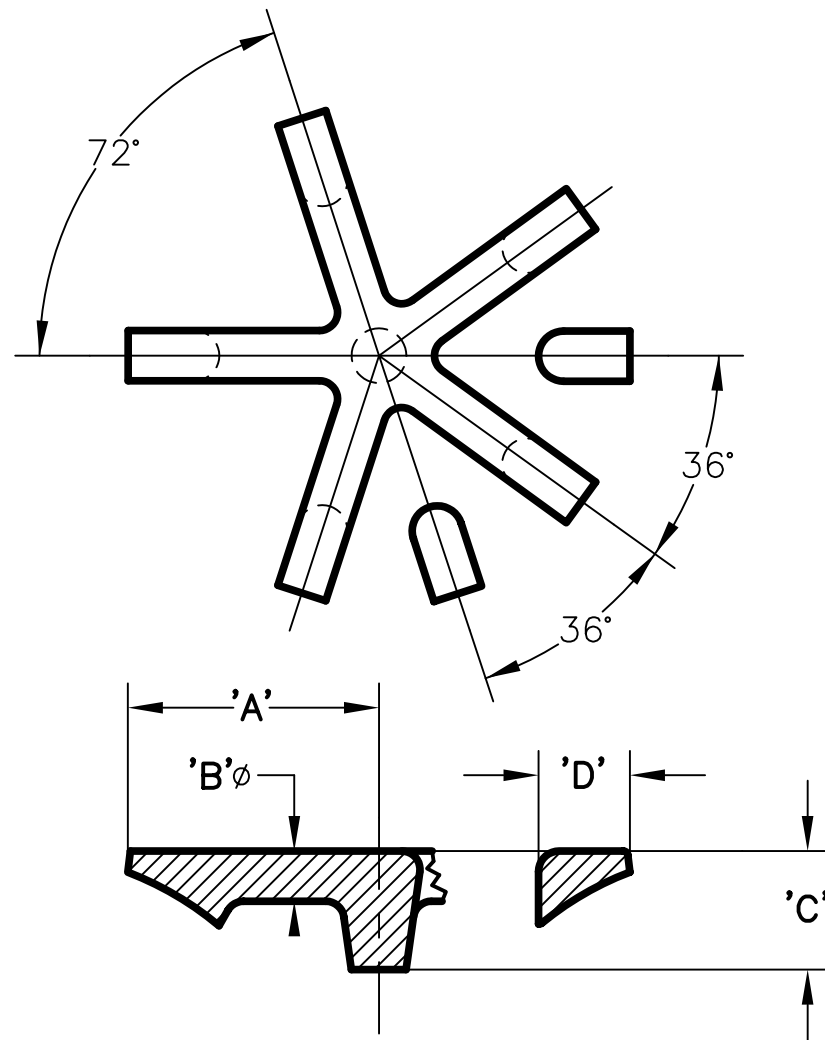
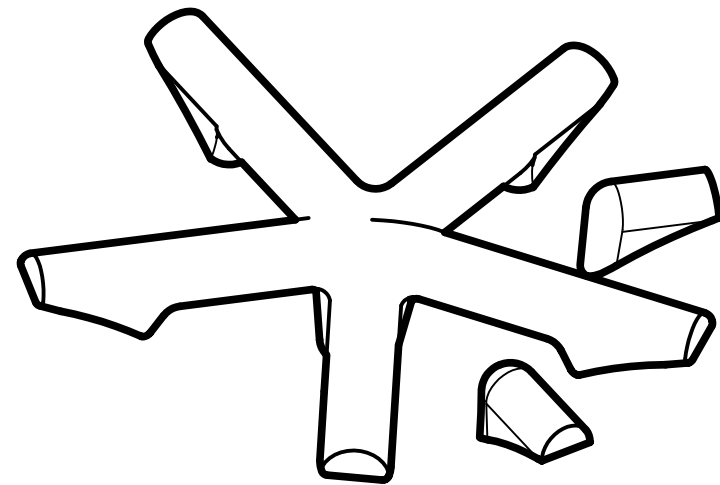


NEXT ASSEMBLY  
E.W.O. 4338

ISSUE	REVISION RECORD	DATE	APPD.
-------	-----------------	------	-------

# PH285P-8 SOCKET (CROSSBAR-FLUSH)

DIMENSIONAL DATA  
COMMERCIAL TOLERANCE APPLIES



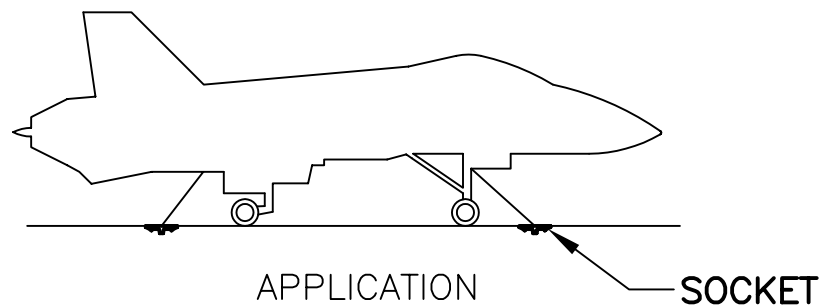
### SPECIFICATIONS

**MATERIAL:**  
STEEL

**FINISH:**  
SELF COLOR

**WEIGHT:**  
0.8 KGS. [1.9 LBS.]

**MATING FITTINGS:**  
PH285-30C COVER



PH285P-8  
SOCKET  
(CROSSBAR-FLUSH)

**Peck & Hale** PECK & HALE  
180 DIVISION AVENUE  
W. SAYVILLE, N.Y. 11796 U.S.A.

THIS DRAWING AND ANY PRINT MADE THEREFROM IS THE EXCLUSIVE PROPERTY OF PECK & HALE. IT MUST NOT BE TRACED NOR REPRODUCED IN ANY MANNER NOR SHALL IT BE SUBMITTED TO OUTSIDE PARTIES FOR EXAMINATION WITHOUT OUR WRITTEN CONSENT. IT SHALL BE USED ONLY AS MEANS OF REFERENCE TO WORK DESIGNED OR FURNISHED BY US.

MODEL NO.	DIM.	'A'	'B'	'C'	'D'
PH285P-8	MM	87.3	17.5	41.3	31.8
	(INCH)	(3.44)	(0.69)	(1.63)	(1.25)

FSCM No: 94658	DRN: S. JEFFREY	SHEET	OF
DATE: 6/14/17	CHK: R. BELKIN	3495	REV.
SCALE: NONE	APPD: C. EFSTATHIOU		