

NEXT ASSEMBLY

E.W.O. 3673

ISSUE

REVISION RECORD

DATE

APPD.

PH3975-1 CLEAT FITTING (BREECH BASE)

DIMENSIONAL DATA
COMMERCIAL TOLERANCE APPLIES

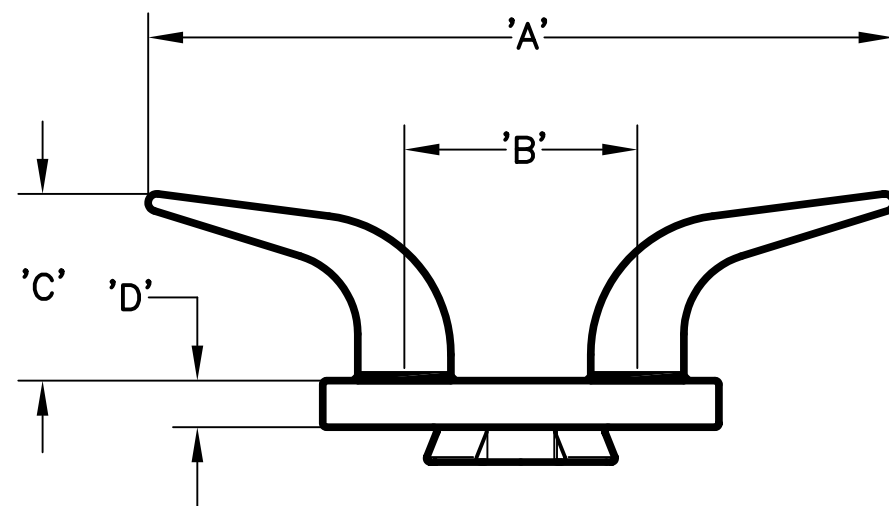
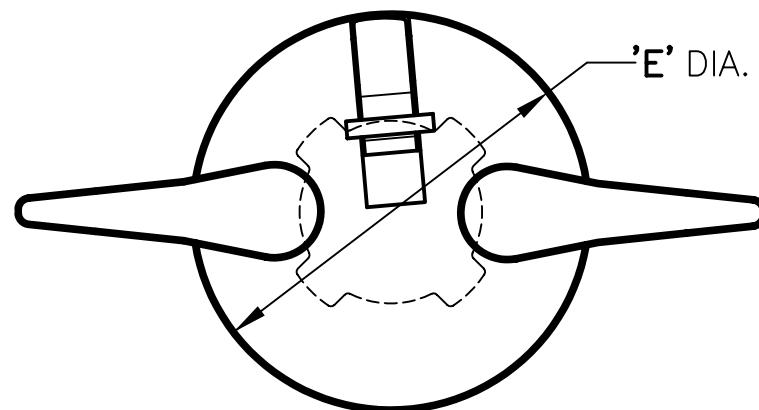
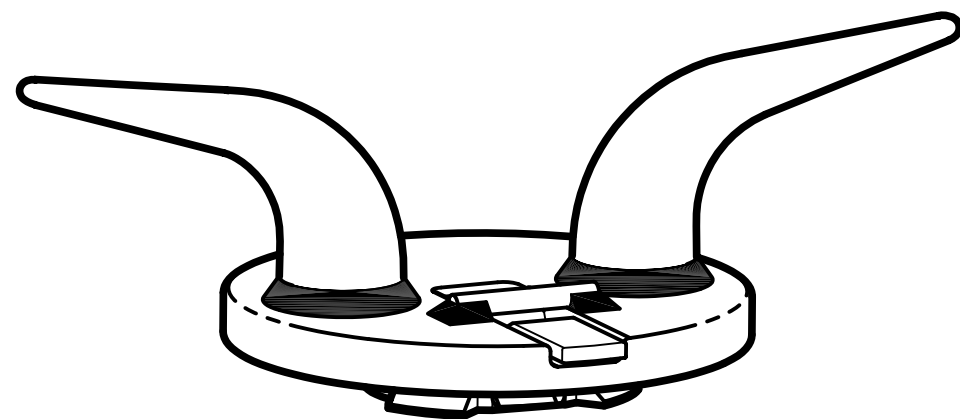
SPECIFICATIONS

MATERIAL:
STEEL

STRENGTH: (HORIZONTAL TO DECK)
SAFE WORKING-13,500 LBS.
PROOF-27,000 LBS.
MINIMUM BREAK-54,000 LBS.

FINISH:
GALVANIZED
ENAMEL TOP COAT (COLOR-YELLOW)

MATING FITTINGS:
F655 & F700 SOCKETS



MODEL NO.	DIM.	'A'	'B'	'C'	'D'	'E'
PH3975-1	MM	406.4	127.0	101.6	20.1	216.0
	(INCH)	(16.00)	(5.00)	(4.00)	(0.80)	(8.50)

PH3975-1 CLEAT FITTING (BREECH BASE)



PECK & HALE
180 DIVISION AVENUE
W. SAYVILLE, N.Y. 11796 U.S.A.

THIS DRAWING AND ANY PRINT MADE THEREFROM IS THE EXCLUSIVE PROPERTY OF PECK & HALE. IT MUST NOT BE TRACED NOR REPRODUCED IN ANY MANNER NOR SHALL IT BE SUBMITTED TO OUTSIDE PARTIES FOR EXAMINATION WITHOUT OUR WRITTEN CONSENT. IT SHALL BE USED ONLY AS MEANS OF REFERENCE TO WORK DESIGNED OR FURNISHED BY US.

FSCM No: 94658	DRN: S. JEFFREY	SHEET	OF
DATE: 11/15/12	CHK: J. NAIR	4820	REV.
SCALE: NONE	APPD: J. NAIR		