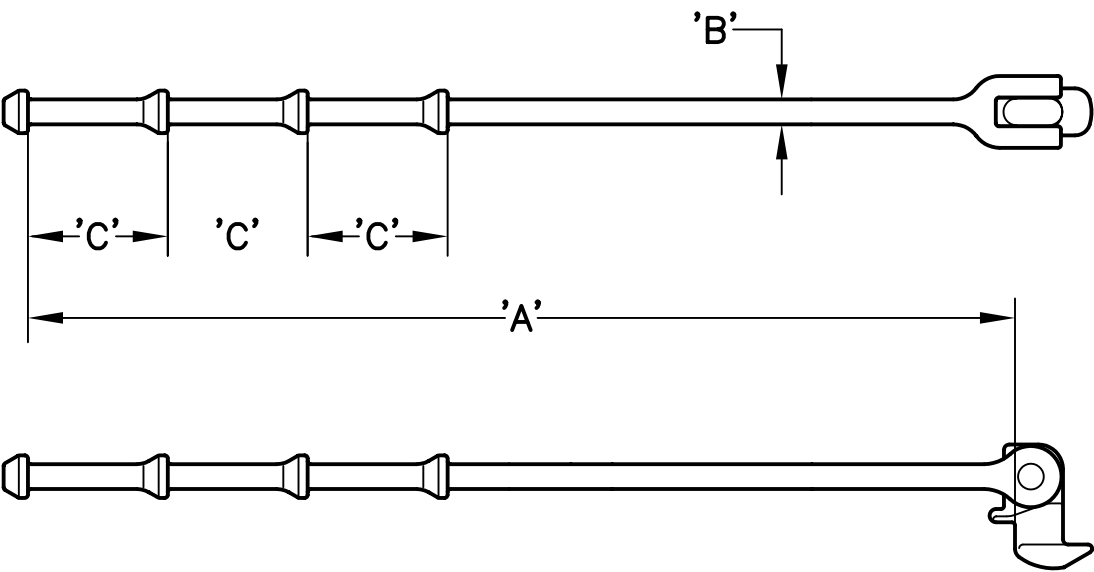


NEXT ASSEMBLY  
E.W.O. 3466

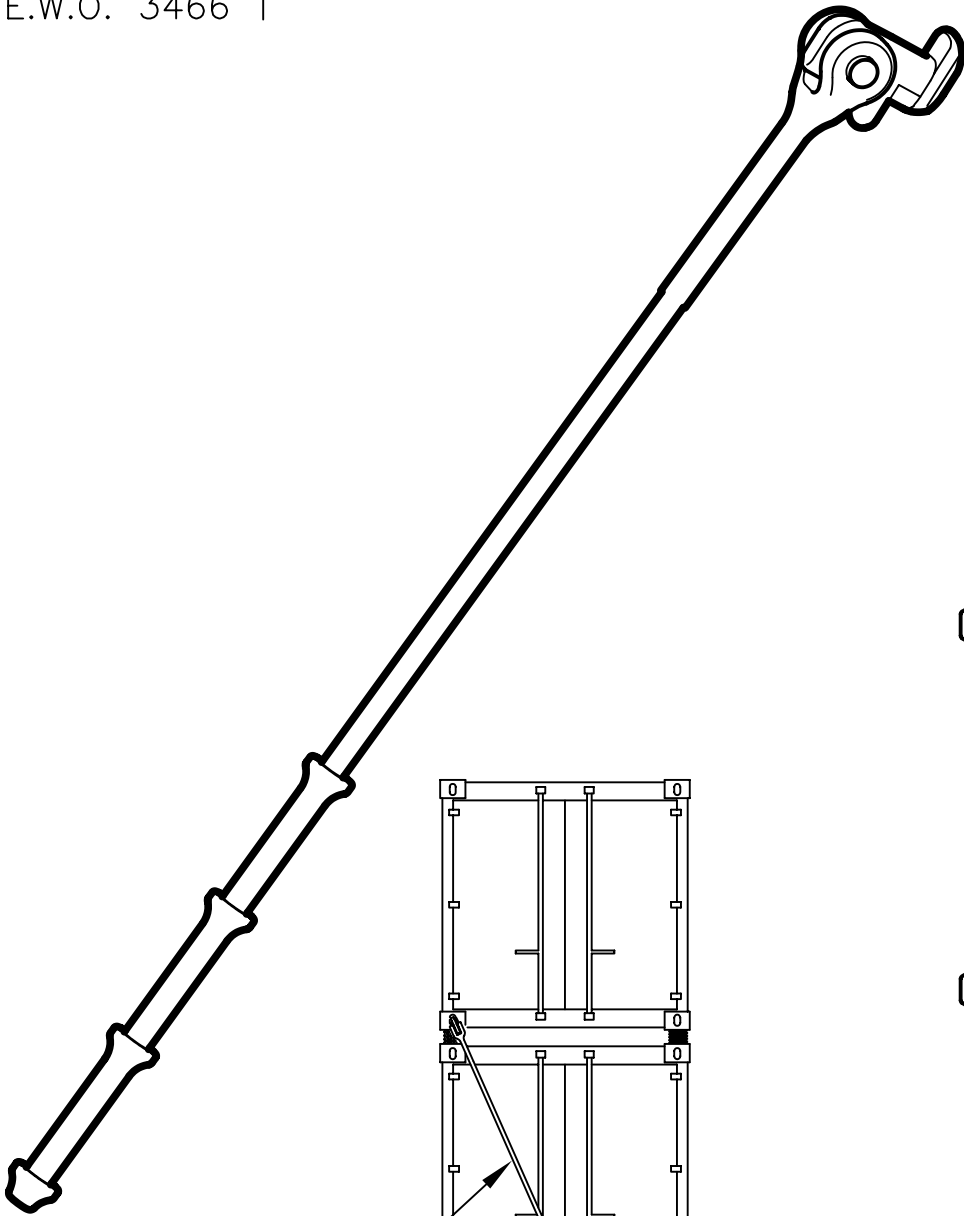
ISSUE	REVISION RECORD	DATE	APPD.

RR21-50-4950  
RIGID ROD  
(SWIVEL HEAD)

DIMENSIONAL DATA  
COMMERCIAL TOLERANCE APPLIES



MODEL NO.	DIM.	'A'	'B'	'C'
RR21-50-4950	MM	4950.0	26.0	146.1
	(INCH)	(194.9)	(1.02)	(5.75)



RIGID ROD

APPLICATION

SPECIFICATIONS

- MATERIAL:**  
STEEL
- STRENGTH:**  
SAFE WORKING-25 TONNES  
PROOF-33.3 TONNES  
MINIMUM BREAK-50 TONNES
- FINISH:**  
GALVANIZED
- WEIGHT:**  
23.6 KGS. [51.9 LBS.]
- MATING FITTINGS:**  
TB118 TURNBUCKLE

RR21-50-4950  
RIGID ROD  
(SWIVEL HEAD)

**Peck & Hale** PECK & HALE  
180 DIVISION AVENUE  
W. SAYVILLE, N.Y. 11796 U.S.A.

THIS DRAWING AND ANY PRINT MADE THEREFROM IS THE EXCLUSIVE PROPERTY OF PECK & HALE, IT MUST NOT BE TRACED NOR REPRODUCED IN ANY MANNER NOR SHALL IT BE SUBMITTED TO OUTSIDE PARTIES FOR EXAMINATION WITHOUT OUR WRITTEN CONSENT. IT SHALL BE USED ONLY AS MEANS OF REFERENCE TO WORK DESIGNED OR FURNISHED BY US.

FSCM No: 94658	DRN: S. JEFFREY	SHEET	OF
DATE: 11/7/12	CHK: J. SZEGLIN	3759	
SCALE: NONE	APPD: J. SZEGLIN	DWG. NO.	REV.