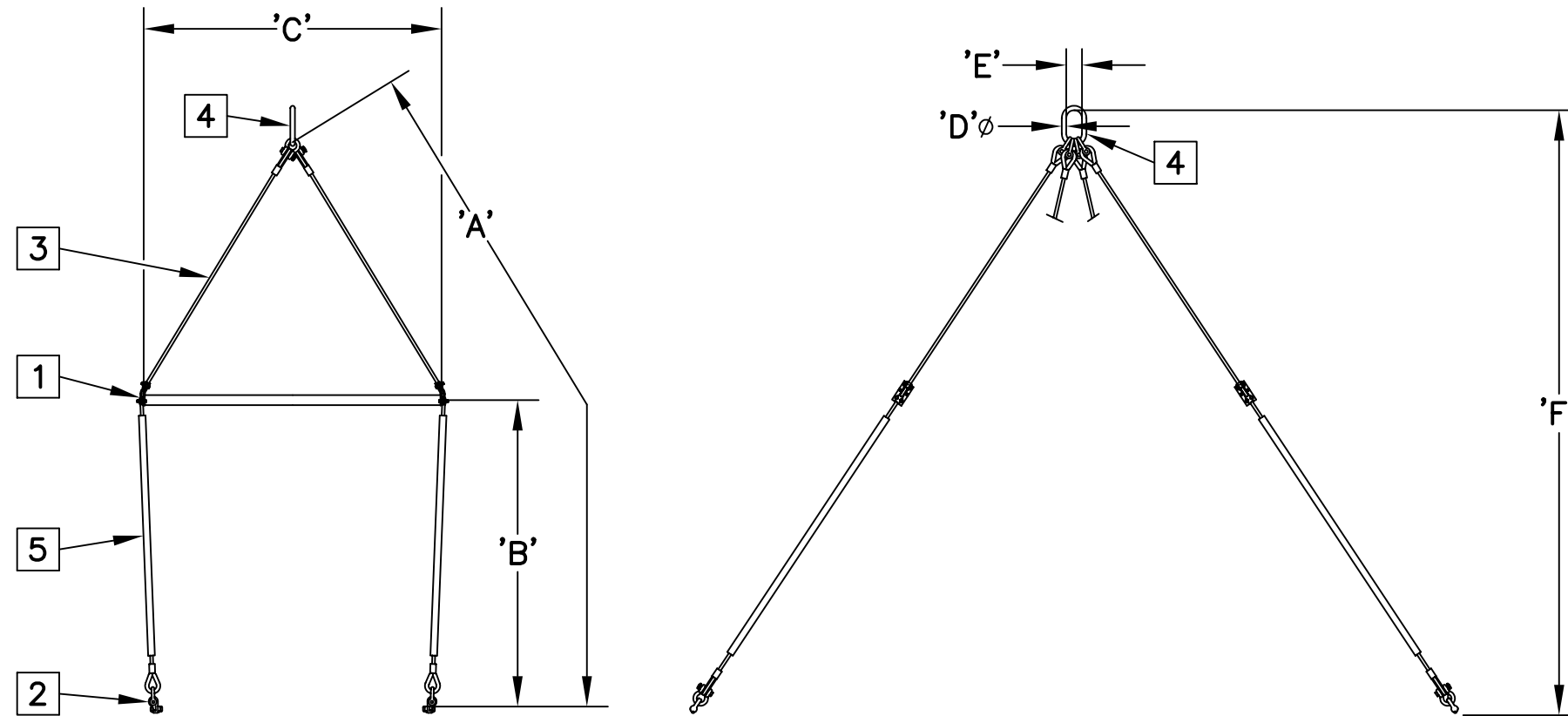


NEXT ASSEMBLY
E.W.O. 3577

SLG110-2 SLING (20' CONTAINER)

ISSUE	REVISION RECORD	DATE	APPD.



SPECIFICATIONS

MATERIAL:
ALL CONSTRUCTION IS PER BEST COMMERCIAL QUALITY. SEE CHART FOR SPECIFIC MATERIAL.

STRENGTH:
SAFE WORKING-20.0 TONNES

FINISH:
ALL SURFACE FINISHES PROVIDE GOOD CORROSION PROTECTION. SEE CHART FOR SPECIFIC FINISH.

MODEL NO.	DIM.	'A'	'B'	'C'	'D'	'E'	'F'
SLG110-2	FT-IN	20'-10"	10'-0"	9'-0"	0'-1 3/4"	0'-6"	18'-6"

SLG110-2 SLING (20' CONTAINER)

Peck & Hale PECK & HALE
180 DIVISION AVENUE
W. SAYVILLE, N.Y. 11796 U.S.A.

THIS DRAWING AND ANY PRINT MADE THEREFROM IS THE EXCLUSIVE PROPERTY OF PECK & HALE. IT MUST NOT BE TRACED NOR REPRODUCED IN ANY MANNER NOR SHALL IT BE SUBMITTED TO OUTSIDE PARTIES FOR EXAMINATION WITHOUT OUR WRITTEN CONSENT. IT SHALL BE USED ONLY AS MEANS OF REFERENCE TO WORK DESIGNED OR FURNISHED BY US.

FSCM No: 94658	DRN: S. JEFFREY	SHEET 1 OF
DATE: 3/3/17	CHK: C. EFSTATHIOU	4090
SCALE: NONE	APPD: C. EFSTATHIOU	DWG. NO.
		REV.

ITEM NO.	PART NAME	PART DESCRIPTION
5	TUBING	PLASTIC, CLEAR
4	LINK	STEEL, PAINTED
3	WIRE ROPE	STEEL, GALVANIZED
2	LIFTING LUG	STEEL, PAINTED
1	SPREADER BAR	

LIST OF COMPONENTS

4

3

2

1

4

3

2

1