

NEXT ASSEMBLY

ISSUE

REVISION RECORD

DATE

APPD.

TB108-42-2 TURNBUCKLE (CLOSED BODY)

DIMENSIONAL DATA
COMMERCIAL TOLERANCE APPLIES

SPECIFICATIONS

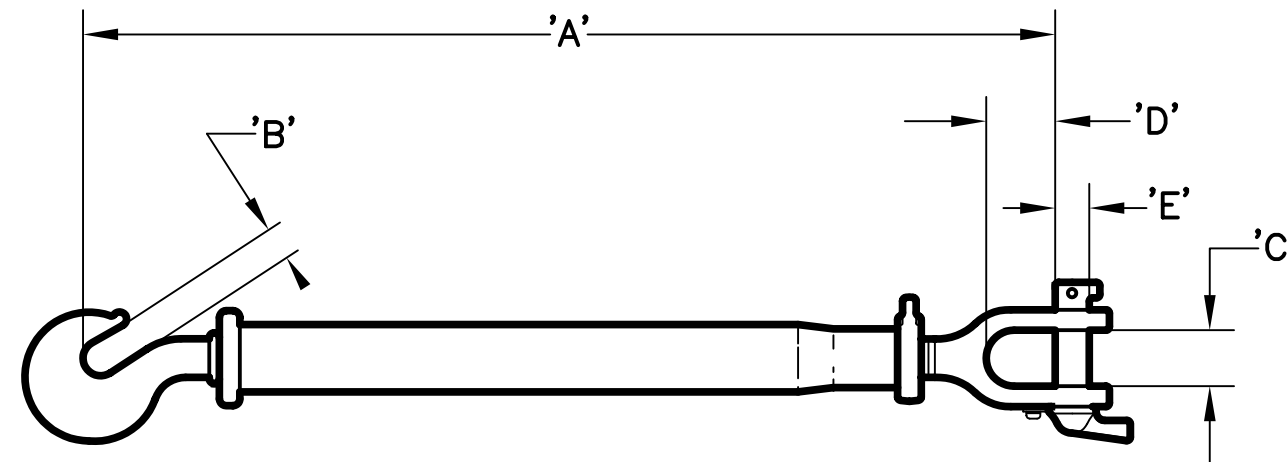
MATERIAL:
STEEL

STRENGTH:
SAFE WORKING-21 TONNES
PROOF-28 TONNES
MINIMUM BREAK-42 TONNES

FINISH:
GALVANIZED

WEIGHT:
17.3 KGS. [38.1 LBS.]

MATING FITTINGS:
RR4, RR8, & RR19 RIGID RODS



MODEL NO.	DIM.	'A' ADJUSTMENT	'B'	'C'	'D'	'E'
TB108-42-2	MM	914.0 TO 1372.0	32.0	52.4	63.2	31.8
	(INCH)	(36.0) TO (54.0)	(1.25)	(2.06)	(2.50)	(1.25)

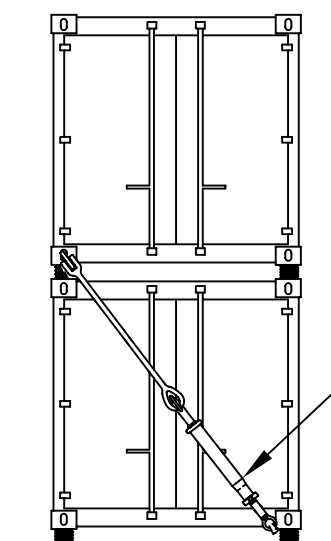
TB108-42-2 TURNBUCKLE (CLOSED BODY)



PECK & HALE
180 DIVISION AVENUE
W. SAYVILLE, N.Y. 11796 U.S.A.

THIS DRAWING AND ANY PRINT MADE THEREFROM IS THE EXCLUSIVE PROPERTY OF PECK & HALE. IT MUST NOT BE TRACED NOR REPRODUCED IN ANY MANNER NOR SHALL IT BE SUBMITTED TO OUTSIDE PARTIES FOR EXAMINATION WITHOUT OUR WRITTEN CONSENT. IT SHALL BE USED ONLY AS MEANS OF REFERENCE TO WORK DESIGNED OR FURNISHED BY US.

FSCM No: 94658	DRN: S. JEFFREY	SHEET	OF
DATE: 11/6/12	CHK: J. SZEGLIN	3490	REV.
SCALE: NONE	APPD: J. SZEGLIN		



TURNBUCKLE

APPLICATION